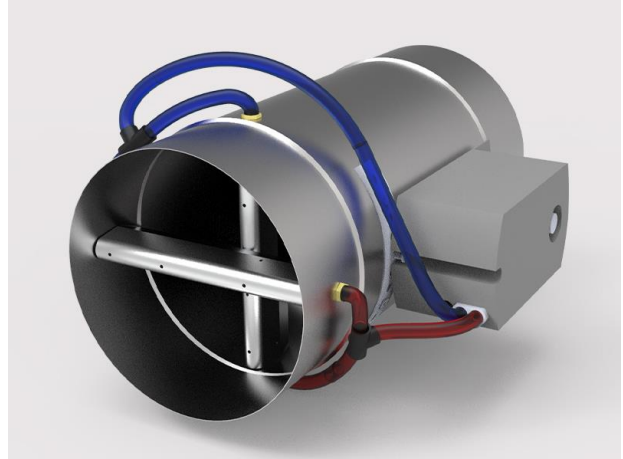
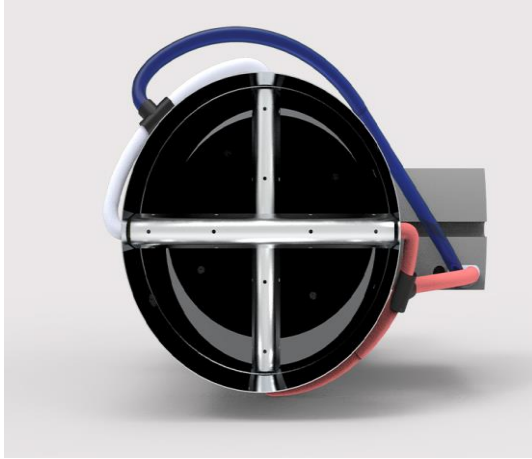


VAV UNITS – VARIABLE VOLUME UNITS –CILINDRICAL - CKV-01



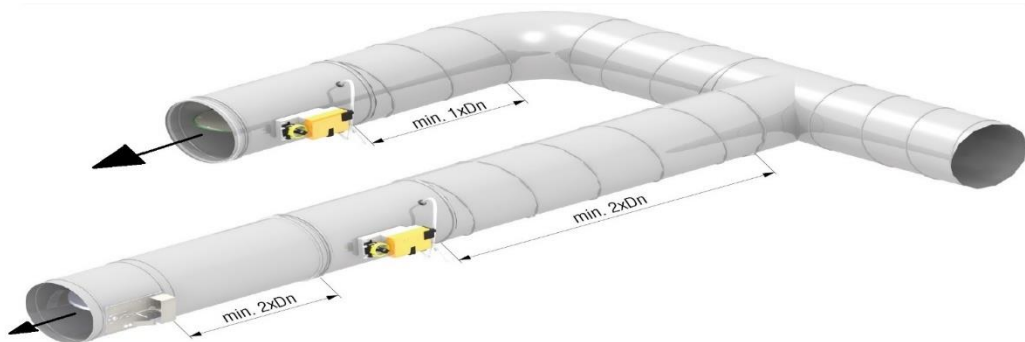
AREAS OF USAGE AND FEATURES: It is used with automation in ventilation systems. It provides ease of use in situations where the air flow needs to be changed optionally. It provides ease of use in intensive care units, operating theaters, buildings where savings and comfort are sought. The degree of sealing complies with EN 1751 Class –C. It is controlled by servo motor.

MATERIAL: CKV-01 VAV Damper Body 1 mm. It is produced from galvanized plate by welding method. Damper blade 2mm. It is made of galvanized plate with leakproof seal. Elements that provide damper sensitivity are used from automat material. A specially designed servo motor is used as the main control element.

INSTALLATION: Bolted as standard.

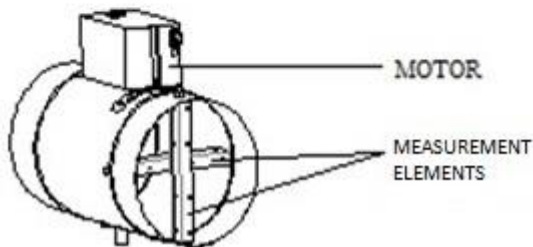
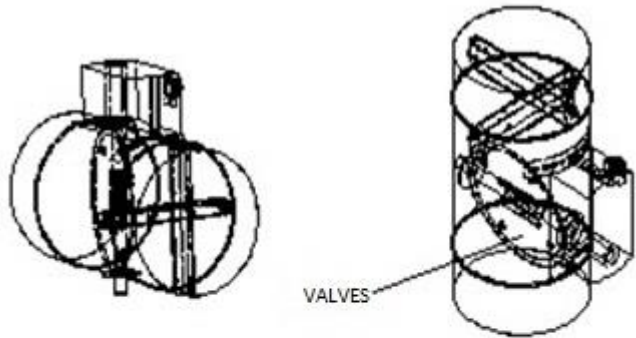
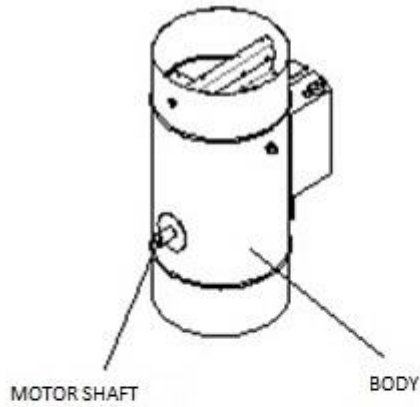
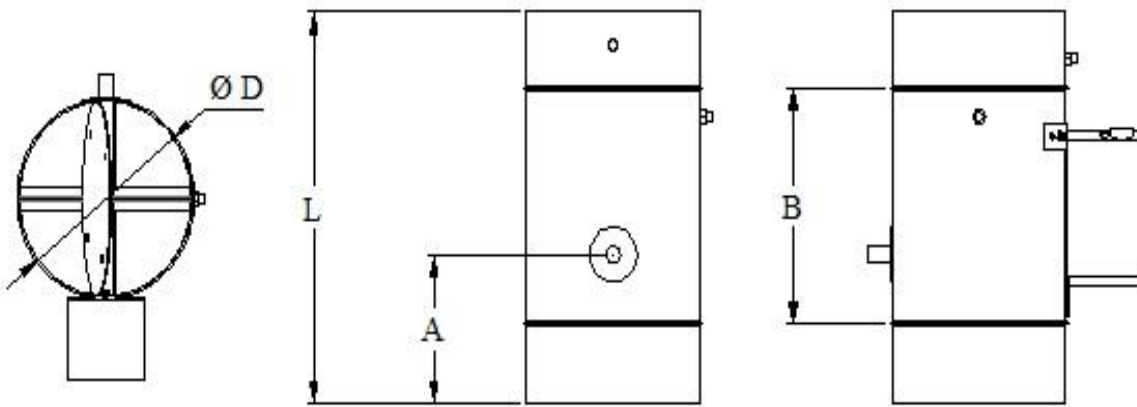
COATING: Galvanized sheet metal

CKV-01 VAV DAMPER MOUNTING



STANDARD DIMENSIONS

MODEL	CKV-100	CKV-125	CKV-150	CKV-200	CKV-250	CKV-315	CKV-355	CKV-400	CKV-500
Ø D	98	125	148	198	248	313	353	398	498
L	330	350	400	430	480	530	580	630	700
A	105	120	140	155	180	205	230	255	305
B	210	230	280	310	360	410	460	510	580



MODEL	AIR SPEED m/s.	AIR FLOW m ³ /h	FOR SUCTION DUCT								FOR BLOW DUCT							
			125 Pa - 250 HZ		250 Pa - 250 HZ		500 Pa - 250 HZ		750 Pa - 250 HZ		125 Pa - 250 HZ		250 Pa - 250 HZ		500 Pa - 250 HZ		750 Pa - 250 HZ	
			Pa	dBA	Pa	dBA	Pa	dBA	Pa	dBA	Pa	dBA	Pa	dBA	Pa	dBA	Pa	dBA
CK-100	2	55	*	44	*	48		51	21	54	*	*	*	23	*	29	*	33
	4	110	*	50	20	53	25	57	27	59	*	23	*	30	*	36	23	40
	6	160	22	54	25	57	29	60	31	62	*	27	*	34	23	40	27	44
	8	215	26	58	28	60	32	63	34	65	*	30	*	37	26	43	30	47
	10	270	29	61	32	63	34	65	37	67	*	32	21	39	28	45	32	49
	12	320	32	64	34	65	37	67	39	69	*	34	23	41	30	47	33	51
CK-125	2	84	*	43	*	47		52	21	54	*	24	*	31	*	37	*	41
	4	168	*	49	20	53	25	57	27	60	*	31	*	38	*	44	23	48
	6	253	22	54	25	57	29	61	31	63	*	35	*	42	23	48	27	52
	8	337	22	58	28	60	32	64	34	66	*	38	*	45	26	51	30	55
	10	421	25	61	32	63	34	66	37	68	*	40	21	47	28	53	32	57
	12	505	29	64	34	66	37	69	39	70	*	42	23	49	30	55	33	59
CK-160	2	139	*	41	*	47	*	52	23	55	*	24	*	31	*	37	*	41
	4	279	*	48	20	53	26	58	30	61	*	31	*	38	*	44	23	48
	6	418	*	52	24	57	30	62	34	65	*	35	*	42	23	48	27	52
	8	558	24	56	28	60	34	65	37	68	*	38	*	45	26	51	30	55
	10	697	28	60	32	63	36	67	40	70	*	40	21	47	28	53	32	57
	12	836	31	63	35	66	39	69	42	72	*	42	23	49	30	55	33	59
CK-200	2	219	*	41	*	46	*	51	21	54	*	24	*	31	*	37	*	41
	4	440	*	48	21	54	27	59	31	62	*	31	*	38	*	44	23	48
	6	656	21	52	27	59	33	64	36	67	*	35	*	42	23	48	27	52
	8	880	26	56	31	63	37	67	40	70	*	38	*	45	26	51	30	55
	10	1100	30	60	35	66	40	70	43	73	*	40	21	47	28	53	32	57
	12	1320	33	63	38	68	43	72	46	75	*	42	23	49	30	55	33	59
CK-250	2	345	*	43	*	38	*	43	*	46	*	24	*	31	*	37	*	41

	4	690	*	51	*	49	20	53	23	56	*	31	*	38	*	44	23	48
	6	1040	*	56	22	55	27	59	30	61	*	35	*	42	23	48	27	52
	8	1380	23	60	27	59	32	63	35	66	*	38	*	45	26	51	30	55
	10	1725	27	63	31	63	36	67	39	69	*	40	21	47	28	53	32	57
	12	2070	31	66	35	66	39	70	42	72	*	42	23	49	30	55	33	59
CK-315	2	550	*	45	*	47	*	52	22	55	*	24	*	31	*	37	*	41
	4	1100	*	52	23	55	28	60	32	63	*	31	*	38	*	44	23	48
	6	1650	23	57	28	60	34	65	37	68	*	35	*	42	23	48	27	52
	8	2200	28	61	33	64	38	68	41	71	*	38	*	45	26	51	30	55
	10	2752	32	64	36	67	41	71	44	74	*	40	21	47	28	53	32	57
	12	3300	36	67	39	70	44	73	47	76	*	42	23	49	30	55	33	59
CK-355	2	701	*	52	*	50	22	55	26	58	*	24	*	31	*	37	*	41
	4	1401	*	56	24	56	29	61	33	64	*	31	*	38	*	44	23	48
	6	2100	24	60	28	60	34	65	37	67	*	35	*	42	23	48	27	52
	8	2803	29	63	33	64	37	68	40	70	*	38	*	45	26	51	30	55
	10	3503	34	66	36	67	40	70	43	72	*	40	21	47	28	53	32	57
	12	4200	39	69	40	69	43	72	45	75	*	42	23	49	30	55	33	59
CK-400	2	891	*	54	24	57	31	62	34	65	*	24	*	31	*	37	*	41
	4	1783	24	58	29	61	35	66	39	69	*	31	*	38	*	44	23	48
	6	2674	28	62	32	64	38	68	41	71	*	35	*	42	23	48	27	52
	8	3565	32	65	35	66	40	70	44	73	*	38	*	45	26	51	30	55
	10	4456	36	68	38	69	43	72	45	75	*	40	21	47	28	53	32	57
	12	5350	40	71	42	71	45	74	47	76	*	42	23	49	30	55	33	59
CK-500	2	905	21	56	27	59	33	64	37	67	*	24	*	31	*	37	*	41
	4	1810	26	60	31	63	37	68	41	71	*	31	*	38	*	44	23	48
	6	2712	30	64	35	66	40	70	44	73	*	35	*	42	23	48	27	52
	8	3620	34	67	38	68	43	72	46	75	*	38	*	45	26	51	30	55
	10	4520	37	70	41	71	45	74	48	77	*	40	21	47	28	53	32	57
	12	5425	42	73	43	73	47	76	50	78	*	42	23	49	30	55	33	59